



HORIZON-CL6-2022-GOVERNANCE-01-07: “New technologies for acquiring in-situ observation datasets to address climate change effects”

Action acronym: UAWOS  
Full title: Unmanned Airborne Water Observing System  
Grant Agreement No: 101081783



**UAWOS - Unmanned  
Airborne Water  
Observing System**

**Deliverable 3.3:**

Flow Velocimetry Surveying Protocol

Date: 20 March 2026

Lead Author: Henrik Grosen

## 1. Change Record

Name	Author(s)	Date	Filename
V1	Henrik Grosen, Sune Nielsen	21 January 2025	UAWOS_D3.3 - Flow Velocimetry Surveying Protocol_v1.docx
V2	Henrik Grosen, Sune Nielsen, Peter Bauer-Gottwein	31 January 2025	UAWOS_D3.3 - Flow Velocimetry Surveying Protocol_v2.docx
V3	Henrik Grosen, Sune Nielsen, Peter Bauer-Gottwein, Michael Pedersen	20 March 2026	UAWOS_D3.3 - Flow Velocimetry Surveying Protocol_v3.docx



## 2. Table of Contents

1. Change Record.....	2
2. Table of Contents .....	3
3. Overview and Summary .....	4
4. Purpose of Flow Velocimetry Surveying.....	5
5. Surveying Specifications.....	7
5.1. Doppler Radar – Flow Velocimetry .....	7
6. Requirements .....	8
6.1. Legal / Legislation .....	8
6.2. Equipment .....	9
7. Desktop Reconnaissance .....	15
8. Planning.....	16
9. VLOS Flight Execution.....	18
9.1. DJI M300 RTK Preparation for Low Altitude TTF Flights.....	18
9.2. VLOS Doppler Radar Flights.....	19
10. BVLOS Flight Execution .....	21
10.1. Relay System Setup.....	21
10.2. Ground Control Station.....	21
10.3. Crew .....	22
10.4. BVLOS Doppler Radar Flights .....	23
10.5. Failsafes .....	23
11. Post-survey Data Processing Steps.....	24
11.1. Doppler Radar Data .....	24
12. Output Data Formats and Example Output .....	25
12.1. Doppler Radar Output .....	25
13. References .....	26

### 3. Overview and Summary

This document summarizes the contactless airborne flow velocimetry surveying workflow developed in UAWOS. The document constitutes deliverable D3.3 of the Horizon Europe project “UAWOS – Unmanned Airborne Water Observing System”, contract number 101081783.

The UAWOS flow velocimetry surveying workflow uses a 24 GHz doppler radar sensor described in detail in Zhou et al., 2024. For flow velocimetry surveying, UAWOS has developed new drone payloads as described in UAWOS deliverable D2.4.

The purpose of the document is to describe hardware components required for the survey, pre-survey planning procedures, field operations and post-survey data processing steps.

Moreover, the document provides an overview of typical survey productivity, expected accuracy, and spatial coverage that can be achieved in UAV flow velocimetry surveys.

## 4. Purpose of Flow Velocimetry Surveying

In-situ reference techniques for river flow velocimetry are Acoustic Doppler Current Profiling (ADCP, Gordon, 1989) and electromagnetic, acoustic or mechanical point velocity measurements using probes (e.g. [OTT MFPro](#)). These techniques require the operator to be in contact with the water, either wading through the river or deploying a boat. Such procedures are time-consuming and expensive and can be risky during extreme conditions. This motivated the development of contactless techniques for monitoring river flow velocity.

Stationary Doppler radar sensors deployed on bridges etc. have become a common contactless monitoring option for river flow velocity (e.g. [OTT SVR 100](#)). At the same time, airborne contactless monitoring options were developed to increase flexibility, spatial resolution and coverage. The most widely used airborne surface velocimetry technique is image cross correlation from optical video coverage of the flow (e.g. Manfreda and Dor, 2023; Strelnikova et al., 2023). Such workflows provide high-resolution surface velocity fields and high accuracy. However, limitations include the need for trackable features in the flow (bubbles, debris, or artificial seeding), the need for sufficient illumination, and complex processing workflows, including the need to stabilize videos and stitch individual video scenes, when the river is wide. Recently, video-velocimetry using thermal video coverage has also been successfully demonstrated, exploiting natural temperature patterns that can be tracked in rivers (Legleiter et al., 2024).

Airborne doppler radar is an alternative to image velocimetry, which is particularly attractive for larger rivers. As described in detail in Zhou et al., 2024, airborne doppler radar provides surface velocity measurements which are representative of an elliptic footprint on the water surface. The size of the footprint depends on the flight height but is typically a few square meters. Doppler radar thus provides much lower spatial resolution than image velocimetry, but data processing effort is significantly reduced and processing of velocity estimates in real-time is straightforward. Doppler radar is suitable for both large and small rivers, as the spacing of velocity samples can be adjusted according to river width to provide appropriate resolution of the lateral surface velocity profile in the river, which is required for the estimation of river discharge.

Figure 1 provides an overview of the flow velocimetry surveying setup and the different hardware components. The centerpiece is the UAV carrying both a doppler radar sensor and a GNSS receiver. In areas with good GNSS coverage, the UAV can be directly linked up to an RTK network provider. In areas with sub-optimal GNSS coverage, a local base station is employed for providing RTK corrections to the UAV via Starlink.

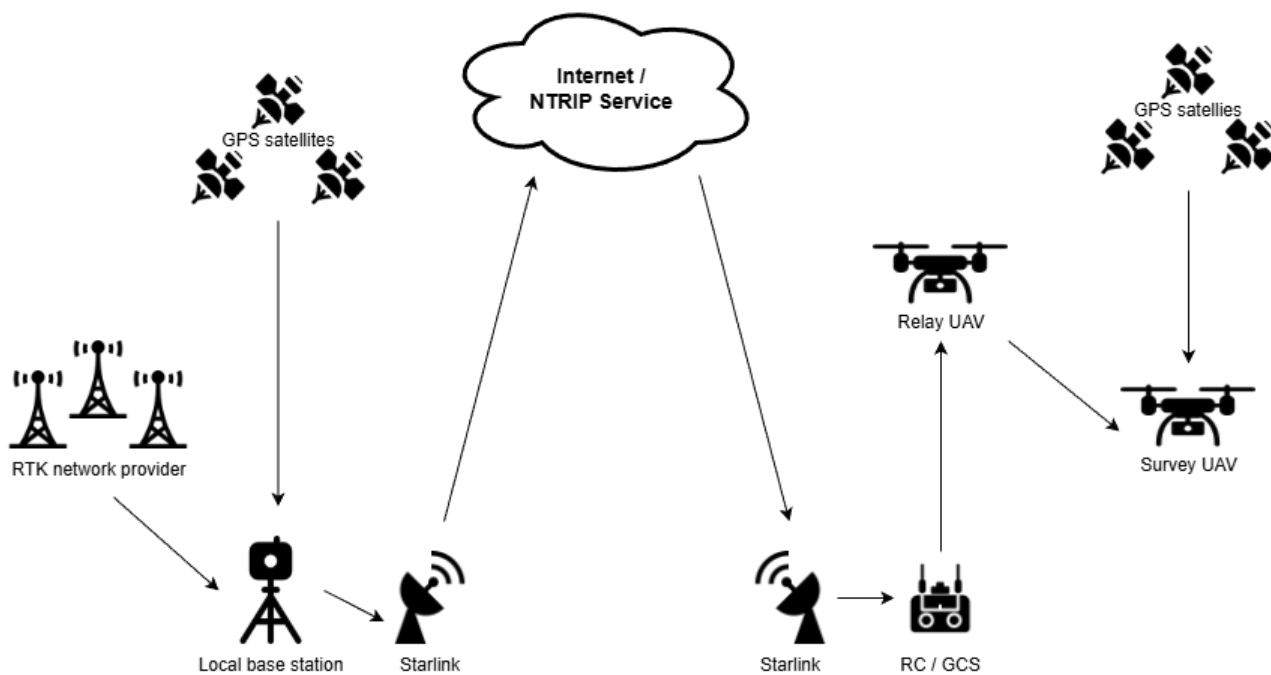


Figure 1 - Overview of flow velocimetry survey setup

## 5. Surveying Specifications

### 5.1. Doppler Radar – Flow Velocimetry

#### 5.1.1. Accuracy

The expected accuracy is 0.1 m/s or better.

#### 5.1.2. Productivity & Scale (VLOS)

The productivity which can be expected is highly dependent on the survey area's characteristics. Challenging accessibility to takeoff locations is a primary factor that can hamper a high productivity. The actual flight time for performing a cross section is typically between 5-20 minutes. Accessibility and flight route endpoint adjustments are accountable for most of the time spent on performing a flow velocimetry cross section. Based on practical experience from a variety of rivers a productivity of 0.75-1.5 cross sections/hour can be expected.

#### 5.1.3. Productivity & Scale (BVLOS)

Productivity of BVLOS surveys has not yet been evaluated in the field. This is planned for 2026. We will be able to provide robust estimates by end-2026. We expect a productivity increase of at least factor 2, depending on survey area characteristics.

#### 5.1.4. Flight Parameters

Altitude: 4.0 m

Velocity: 20 seconds hovering points

Terrain Follow: TTF (True Terrain Follow) with altimeter.

Coverage: Dual pass cross section

## 6. Requirements

### 6.1. Legal / Legislation

This document aligns with [EASA REGULATION \(EU\) 2019/947](#). For non-EU countries, operators must consult local regulations for UAV operations.

Under EASA REGULATION (EU) 2019/947, the 'open' category allows the use of UAVs with a maximum take-off weight (MTOW) of up to 25kg for operators with an A3 license. This category, while facilitating a range of operations, imposes several safety and compliance constraints, such as:

- Visual Line of Sight (VLOS) Operations: The UAV must be operated within the visual line of sight of either the remote pilot or a designated observer in direct communication with the pilot.
- Restrictions on Flying Over Uninvolved People: To ensure public safety, UAVs in the open category are prohibited from flying over people who are not part of the operation.
- Local Restrictions: Operators must adhere to specific national regulations within EU member states. These can include safety distances from sensitive areas like airports, military installations, and embassies.

Under EASA REGULATION (EU) 2019/947, the 'specific' category is tailored for UAV operations with higher risks, necessitating in-depth risk assessments and stringent safety protocols. This category facilitates complex operations like Beyond Visual Line of Sight (BVLOS) flights.

One regulatory pathway for such operations is the [Pre-Defined Risk Assessment PDRA-G03](#) established by EASA. PDRA-G03 enables BVLOS operations under predefined operational and technical conditions, typically in sparsely populated environments.

The PDRA-G03 framework defines the general operational boundaries and safety requirements for BVLOS missions. These include operation in areas with low ground risk, the use of reliable command and control links between the ground control station and the UAV, clearly defined operational volumes and contingency procedures, and appropriate measures to ensure separation from other airspace users.

Compared to custom operational approvals based on a full SORA assessment, PDRA scenarios provide a standardized regulatory framework that simplifies the authorization process, since the overall risk model and operational assumptions are predefined.

For BVLOS river surveying operations within the UAWOS project, the PDRA-G03 scenario represents a suitable regulatory framework.

This Flow Velocimetry Surveying Protocol describes VLOS UAV operation in the 'open' category and BVLOS UAV operation in the 'specific' category under PDRA-G03.

## 6.2. Equipment

This Flow Velocimetry Surveying Protocol outlines generic equipment requirements, complemented by specific equipment recommendations. The protocol's descriptions and guidelines are based on these recommendations.

### 6.2.1. UAV Multirotor

Any RTK-enabled multirotor UAV with sufficient payload capacity for the chosen sensors is appropriate for VLOS operation. The flow velocimetry surveying protocol recommends the DJI M300 RTK as a reference for VLOS operation due to its compatibility with UAWOS payload requirements. The M300 RTK provides reasonable flight time and is compatible with UgCS and the Skyhub payload interface, making it a suitable choice for the protocol's applications.

For BVLOS operation it is recommended to utilize two UAV platforms: a Survey UAV responsible for data acquisition and a Relay UAV supporting command and control link extension and situational awareness. As Survey UAV it is recommended to utilize a UAV platform based on an Ardupilot/Pixhawk open architecture, allowing integration of a relay communication system, firmware-level control, configurable failsafe procedures and integration of custom FPV and collision avoidance solutions. For BVLOS operation the flow velocimetry surveying protocol recommends the Dronevolt Kobra as Survey UAV and the DJI M300 RTK as Relay UAV. The Kobra survey UAV provides long flight time and operational characteristics comparable to the DJI M300 RTK.

The DJI M300 RTK Relay UAV is recommended to be equipped with a DJI Zenmuse H20 payload. The H20 provides up to 23x hybrid zoom capability and stabilized visual observation of the operational area, which is useful for maintaining situational awareness around the Survey UAV. The payload also supports smart tracking functions, allowing operators to lock onto and continuously follow moving or stationary objects of interest, improving monitoring of the Survey UAV and surrounding airspace.



*Figure 2 - DJI M300 RTK without payload*



*Figure 3 - Dronevolt Kobra*

### 6.2.2. Relay system

The relay system facilitates transmission of command and control link, telemetry, payload data, and video feeds between the ground control station and the survey UAV.

This enables operations in areas where direct radio line-of-sight cannot be maintained by relaying the communication link through the Relay UAV thus providing reliable connectivity over longer distances and in terrain where direct communication would otherwise be obstructed.

This Flow Velocimetry Surveying Protocol recommends using the following relay system equipment:

#### Doodle Labs radios:

- 2 × RM-1700-22M3 mini dual-band radios, installed on the UAV platforms.
- 1 × RM-1700-22W3 dual-band wearable radio, used at the ground control station (GCS).

Different antenna polarizations are used to separate the two communication links. The relay-to-survey link operates with RHCP antennas, while the GCS-to-relay link operates with LHCP antennas. This configuration reduces interference between the two simultaneous radio links and improves overall link stability when the Relay UAV maintains both connections. The following antenna setup is recommended.

GCS:

- 2 × X-Air 2.4 GHz LHCP directional antennas

Relay UAV:

- 1 × Singularity 2.4 GHz LHCP omnidirectional antenna
- 1 × X-Air 2.4 GHz RHCP directional antenna

Survey UAV:

- 2 × Singularity 2.4 GHz RHCP omnidirectional antennas

### 6.2.3. Doppler Radar Payload

This Flow Velocimetry Surveying Protocol recommends using SkyHub as payload controller in conjunction with Geolux RSS-2-300W Doppler Radar (described in UAWOS D2.4). This allows for seamless integration and full compatibility between the recommended UAV, GCS, TFF Radar Altimeter and Rover GPS.

SkyHub is an onboard computer and payload interface, which is compatible with sensors deployed in the UAWOS project. SkyHub facilitates sensor configuration, control and storage of georeferenced raw data from supported sensors. Configuration can be performed using a GUI or command prompt on both Windows PCs and Macs.



*Figure 4 - SkyHub payload controller*



*Figure 5 - DJI M300 RTK with Geolux RSS-2-300W Doppler Radar*

#### **6.2.4. TTF Radar Altimeter**

Any true terrain following system that allows for cm precise terrain following capabilities at low altitudes (4.0 m) above water and ground surfaces can be utilized.

This Flow Velocimetry Surveying Protocol recommends the True Terrain Following kit from SPH Engineering (described in UAWOS D2.2 and UAWOS D2.3).



*Figure 6 - True Terrain Following kit from SPH Engineering*

### 6.2.5.VLOS GCS

Any ground control station software that is designed for planning and executing UAV flights can be utilized. It is highly recommended to use a solution with the following features:

- Terrain follow capability (DEM based)
- True Terrain Follow (TTF)
- Import custom layers / background maps
- Import overlay layers, ex. as kml
- Compatible with PC/MAC for detailed route planning (not practically feasible on tablet / app)

This Flow Velocimetry Surveying Protocol recommends [UgCS](#) as GCS. UgCS is designed for planning and executing UAV flight missions. It supports a wide range of drones, offering intuitive tools for route planning, including terrain-following flights. UgCS offers functionality for importing custom layers, maps, and KML files, enhancing its utility for detailed mission planning. These features allow users to overlay custom geographical data onto the base map, facilitating precise and informed route planning. UgCS is fully compatible with the recommended payload equipment (SkyHub and Geolux RSS-2-300W Doppler Radar).

### 6.2.6.BVLOS GCS

The BVLOS GCS extends the VLOS GCS with additional displays/outputs required during BVLOS operations.

The setup includes four displays:

- UgCS and CPM for route execution, telemetry, TTF output, and payload data
- Survey UAV FPV feed for low-altitude monitoring
- Relay UAV (Zenmuse H20) feed for cross section overview and situational awareness
- Doodle Labs interface for link quality, latency, and bandwidth monitoring

The Doodle Labs GCS radio unit is mounted on a telescopic mast with directional antennas aligned towards the relay UAV.

Supporting Infrastructure

- Two laptops run GCS software, video feeds, and link monitoring, connected to the displays.
- A wired network (RJ45) connects laptops and the Doodle Labs unit via a switch, with Starlink providing internet access and NTRIP corrections for RTK.
- Power is supplied by a portable generator, including battery charging for survey and relay UAVs.

### 6.2.7.Rover GPS

Any multi-band, RTK/PPK enabled rover GPS with an update frequency of at least 5 Hz and RINEX output capability can be utilized.

This Flow Velocimetry Surveying Protocol recommends the [Emlid Reach M2](#) as rover GPS. The Emlid Reach M2 is fully compatible with the recommended payload equipment (SkyHub and Geolux RSS-2-300W Doppler Radar).



*Figure 7 - Emlid Reach M2*

### 6.2.8. Local Base Station

Any professional grade, multi-band base station that allows connecting to a local RTK network and with NTRIP casting capabilities can be utilized.

This Flow Velocimetry Surveying Protocol recommends the [Emlid RS3](#) as local base station.



*Figure 8 - Emlid RS3*

### 6.2.9. Mobile Broadband Modem

Any mobile broadband modem and ISP that provides reliable connectivity in the area of interest can be utilized. The recommended setup is RTK based on NTRIP corrections between the base station and rover GPS, which requires two mobile broadband modems, one at the base station, and one at the GCS.

If reliable 4G LTE coverage is available in the survey area, a high-quality 4G LTE router is recommended RC/GCS internet connectivity. Practical experience has shown that carrying a high-quality 4G LTE router in a backpack is an excellent solution, supporting a high degree of mobility often required by ground crew. This Flow Velocimetry Surveying Protocol recommends using a 4G LTE router from Teltonika. Positive experience has been achieved with Teltonika RUT951 and Teltonika RUTX12.

Often flow velocimetry surveys has to be performed in remote locations and/or at locations which do not have reliable mobile broadband connectivity from common ISPs. For those situations this Flow Velocimetry Surveying Protocol recommends utilizing Starlink as mobile broadband ISP. Starlink is the most reliable solution for providing low latency internet connectivity in remote areas across multiple countries with speeds between 25-220 Mbps. Practical experience has shown that the wifi network created by Starlink has limited

range, which can be cumbersome. Therefore, at the RC/GCS it is recommended to use a high-quality router as a repeater/extender in conjunction with the Starlink.

See <https://www.starlink.com/map> for availability.



*Figure 9 - Starlink receiver and router*

## 7. Desktop Reconnaissance

The purpose of desktop reconnaissance is:

- Decide if onsite reconnaissance is required
- Decide upon VLOS operation in the Open Category vs. BVLOS operation in the Specific Category using PDRA-G03
- Decide upon equipment setup

BVLOS operations under PDRA-G03 are conducted within controlled conditions to manage ground and air risk and ensure safe separation from people and other airspace users. During desktop reconnaissance the main points that must be fulfilled are:

- Environment: Controlled or sparsely populated areas only, no flights over assemblies of people
- Operational volume: Clearly defined flight area with ground risk buffer and contingency zones
- Airspace: Strategic deconfliction required (segregation, coordination, or NOTAM)

In general, onsite reconnaissance is always recommended prior to survey. It is especially recommended if either:

- Takeoff locations for UAV flights covering the area of interest cannot be reliably identified, or
- Accessibility to the takeoff locations cannot be clearly identified, or
- Elements/obstacles that may constitute a hazard for flights cannot be identified/defined with high confidence

If there is no existing up to date and precise digital reference data (orthomosaic, satellite imagery, DEM or similar) of the survey area, then it is recommended to initially perform planning and execution of the LiDAR survey. Thereafter, post process the LiDAR survey data in order to attain up to date and precise digital reference data.

Once up to date and precise digital reference data is available it is recommended to initiate planning of flow velocimetry flights.

Often flow velocimetry surveys are to be performed in remote locations and/or at locations which do not have an optimal line-of-sight to satellites. Therefore, GNSS and mobile broadband reception can be unreliable. It is recommended to research these conditions as best possible as part of the desktop reconnaissance.

If mobile broadband reception is expected to be unreliable from a specific ISP, examine alternative ISP's. If no ISP's are expected to provide reliable reception it is recommended to employ Starlink as mobile broadband ISP.

It is important that the GNSS base station is placed in a location with optimal GNSS reception and preferably within 10 km of the survey area.

## 8. Planning

During the planning phase the flight routes are created. Any appropriate software solution for this purpose can be utilized. Meticulous planning is often highly beneficial when planning flow velocimetry surveys due to challenging site characteristics combined with flights at a low altitude.

For flow velocimetry route planning it is highly recommended add an up to date and precise digital reference as a custom layer or background map in the GCS prior to initiate route planning.

Flow velocimetry routes must be flown at low altitude. TTF is essential during these flights. They cannot be safely performed using AGL heights from a barometer or elevation model.

There are two main factors which impact doppler radar data quality:

- 1) Roughness of the water surface. Low water surface velocity often entails low water surface roughness. During the planning phase it is recommended to consider this aspect. If a desired cross section is suspected to exhibit low water surface roughness, then it is recommended to consider an alternative location with a higher degree of water surface roughness. This could be at a location where the river is narrower or has a different bottom type.
- 2) Downwash from UAV propellers impacts the collected data. At 4m flight altitude, the recommended UAV, the M300 RTK produces downwash to a degree which can be removed in post processing. It is not recommended to plan flow velocimetry surveys using a UAV that produces a higher degree of downwash compared to the M300 RTK.

The recommended flight altitude using the recommended equipment is 4.0m (from the TTF sensor to the water surface). The planned flight routes can be created at any low altitude, since the actual flight altitude is controlled by the TFF system, which is specified during flight execution.

Initially define a cross section line. Then define two additional lines in parallel with the cross-section line offset by 4.4m upstream and downstream. The flow velocimetry flight consists of two flight lines which must be placed directly above the 4.4m offset lines. The main flight line is the one offset 4.4m in the upstream direction. The secondary flight line is the one offset 4.4m in the downstream direction. The main flight line is flow first (outbound) and the secondary flight line is flow last (homebound).

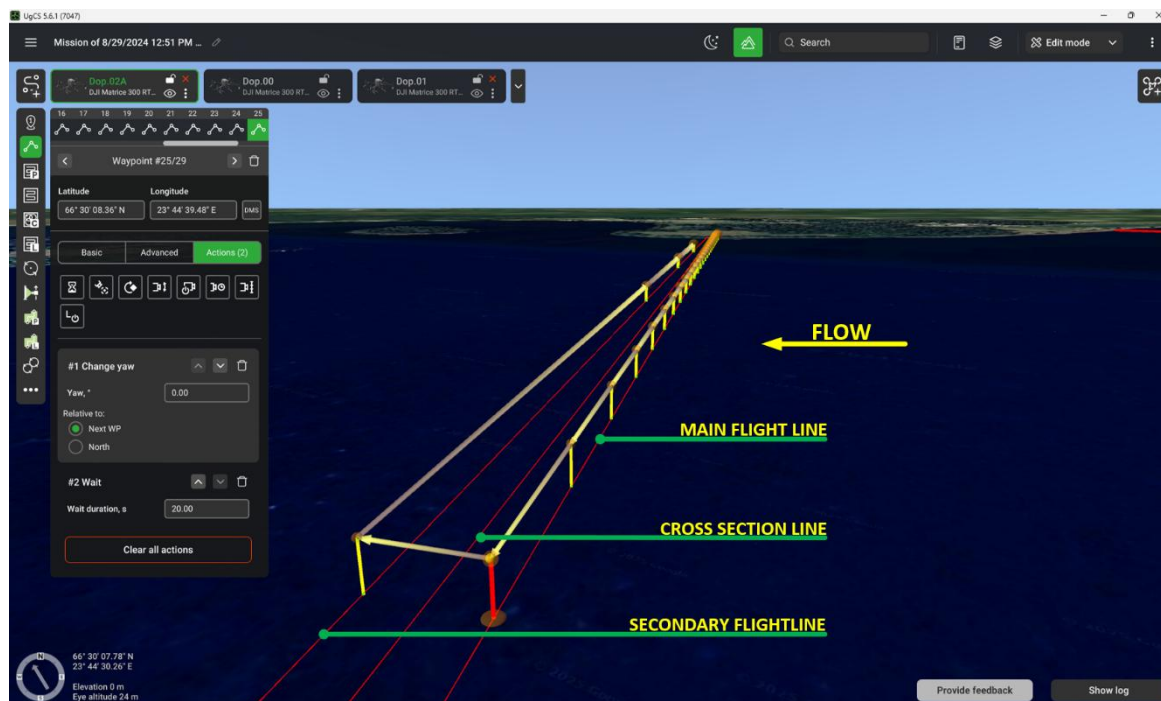


Figure 10 – Flow velocimetry flight route example.



The minimum distance to the shoreline shall be at least 2m in order to obtain usable data. Depending on the quality and precision of the available digital reference, and vegetation conditions at the cross-section location, it may be necessary to increase the distance to the shoreline.

The main flight line shall consist of a number of evenly spaced waypoints at which the UAV must hover for at least 20 seconds while facing the doppler radar towards the cross-section line.

The minimum distance between hover waypoints is 2m.

Practical experience has proven that the recommended UAV, the M300 RTK can, with safety margin, handle up to 25 hovering waypoints on the main flight line. If the river is less than 54m wide, then reduce the number of hovering waypoints. If the river is wider than 54m, then space the 25 hovering waypoints evenly across the main flight line.

After the last hovering waypoint on the main flight line, the next waypoint is placed on the secondary flight line.

The secondary flight line shall consist of 3 hovering waypoints at which the UAV must hover for at least 20 seconds while facing the doppler radar towards the cross-section line. It is recommended to place the 3 waypoints at 75% (halfway between the river center and far-side shoreline), 50% (center of the river) and 25% (halfway between the river center and near-side shoreline).

The recommended GCS, UgCS supports maintaining the necessary yaw angle and hold/wait actions in order to plan and execute flow velocimetry flight routes.

## 9. VLOS Flight Execution

### 9.1. DJI M300 RTK Preparation for Low Altitude TFF Flights

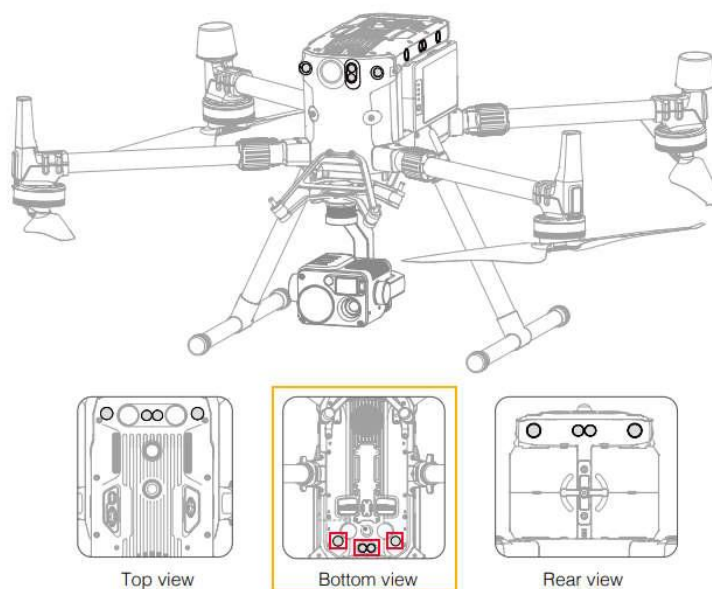
In order to prepare the DJI M300 RTK for low altitude flights using the recommended TFF system (6.2.4) it is highly recommended to complete the following actions.

All downward facing sensors (for the vision/collision avoidance system) must be disabled in DJI Pilot 2 App. It is also required to cover the disabled sensors with electrical tape. If these actions are not taken, TFF flights will be interrupted by numerous “avionics errors” from the flight controller.

MATRICE 300 RTK User Manual

Vision System and Infrared Sensing System

Introduction



**Figure 11 - All four sensors on the bottom must be disabled and covered with tape.**

## 9.2. VLOS Doppler Radar Flights

For flow velocimetry routes it is recommended to adjust/verify endpoints (near riverbanks) before the route is flown. This adjustment is performed to ensure a safe distance from vegetation and other obstacles during execution of the flight route. If the route is planned using a precise and up to date digital reference and there is no vegetation or other obstacles at the riverbanks which can pose a hazard, then endpoint adjustment/verification can be omitted. When performing this decision be aware that at some locations, water surface level, morphology and debris can change in a very short timeframe.

If the flow velocimetry route is flown in conjunction with a bathymetry route, either WPR or sonar route (described in UAWOS D3.2), then it is recommended to perform endpoint adjustment prior to executing the bathymetry route, and then reuse those endpoints adjustments for the flown velocimetry route.

If the flow velocimetry route is flown as standalone, then following steps are recommended for endpoint adjustment:

1. Load prepared route in the GCS software.
2. Take off with the UAV, and manually fly at a safe altitude above the cross-section survey line. Ensure that the UAV location is visible in the GCS alongside the prepared route. While flying above the cross-section survey line, monitor the UAV FPV camera feeds to identify if there is unexpected obstacles/debris at the cross-section survey line. If obstacles are present, relocate to an obstacle free location.
3. Using the UAV FPV camera feeds, establish a safe placement for the waypoint defining the far side endpoint of the cross-section survey line. This should be as close to the riverbank as possible without inducing an increased risk of obstacle collision/entanglement.
4. Using the UAV FPV camera feeds, establish a safe placement for the waypoint defining the near side endpoint of the cross-section survey line. This should be as close to the riverbank as possible without inducing an increased risk of obstacle collision/entanglement.

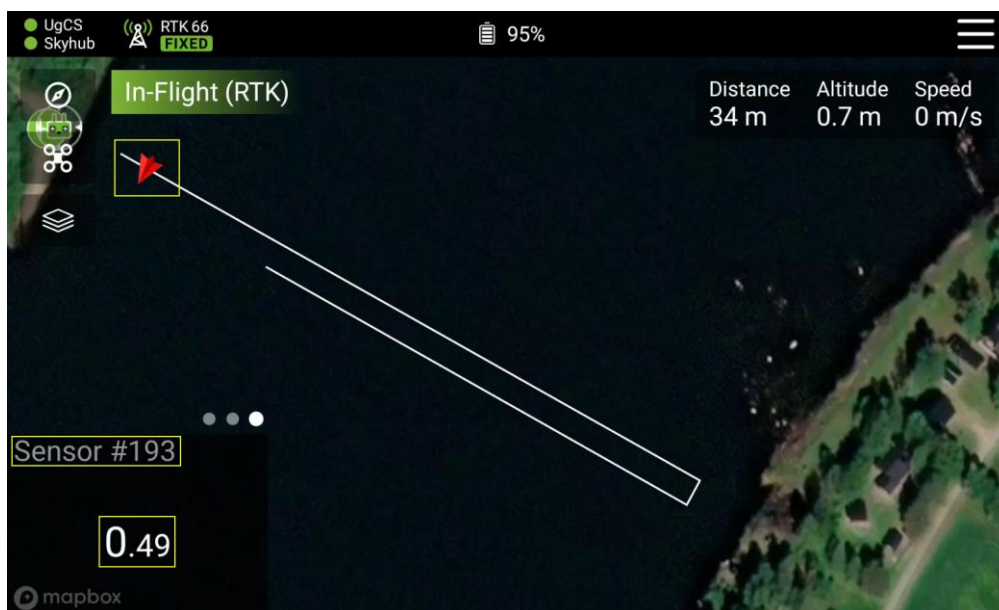
For flow velocimetry route endpoint adjustments, the hovering waypoints closest to the riverbanks can be moved further away from the riverbank if possible, given the requirement of minimum 2m spacing between hovering waypoints can be maintained. If this is not possible, then hovering waypoints close to the riverbanks has to be removed. Thereafter, the neighboring hover waypoint can optionally be moved closer to the riverbank if desired. If waypoints are removed, then be aware that predefined yaw actions may be removed as well and will need to be added to another waypoint.

Once the flow velocimetry flight route has been adjusted, the TTF flight altitude of 4.0m is specified and the flight is executed. Ensure there is sufficient battery capacity remaining to conduct the flight in one go.

Ensure that the UAV has RTK fix during data collection. This is important to achieve a high degree of stability at hovering waypoints which is required for optimal data collection.

During flight execution it is recommended to verify that the doppler radar output is displaying a value. This can be performed using the UgCS CPM software or UgCS app on the remote controller.

If no value is displayed it can be due to too low water surface roughness/velocity. In such case, it is recommended to consider an alternative location with a higher degree of water surface roughness.



*Figure 12 – Remote Controller View: Doppler radar payload in flight along the main flight line. Output in lower left corner reports surface velocity value. Barometric altitude in upper right corner is not in effect due to TFF mode.*

## 10. BVLOS Flight Execution

### 10.1. Relay System Setup

Antennas are connected to the Doodle Labs radio units as specified in Section **Error! Reference source not found.**

The following actions must be performed on all Doodle Labs radio units:

- Power on and connect to radio unit using Wi-Fi
- Go to simple setup menu
- Choose profile “UAV/UGV/Robot”
- Set “Active frequency band” to 2.4 GHz
- Activate “Optimize for latency”

The following actions must be performed on the mini dual-band radio for the Survey UAV:

- Connect the mini dual-band radio serial port to Survey UAV UART/Telemetry port
- In the setup menu, navigate to: Utilities → GCS Finder
- Enable GCS Finder

The following actions must be performed on the dual-band wearable radio for the GCS:

- Connect to GCS laptop running UgCS via ethernet
- Specify required static IP address on GCS laptop running UgCS

When the Relay System is set up correctly the Survey UAV will be present in UgCS.

### 10.2. Ground Control Station

As described in Section **Error! Reference source not found.**, the BVLOS GCS includes four monitors showing telemetry and feeds essential for the operation.

- **Display 1:**

This display shows the Survey UAV FPV feed transmitted via the Doodle Labs relay system as a UDP stream. GStreamer or a similar software solution can be utilized. In combination with UgCS, it provides the Survey UAV Operator with the primary visual reference for the Survey UAV during the mission

- **Display 2:**

UgCS is used as the primary GCS software and shows the position and orientation of both the Survey UAV and the Relay UAV. The Custom Payload Monitor (CPM) is also displayed on this screen. CPM supports managing payloads, viewing live payload data and managing the Skyhub payload controller.

- **Display 3:**

This display is used to monitor link stability and link quality for the Doodle Labs relay setup. It also shows RTK Client, which shows the RTK connection quality of the Survey UAV, and facilitates connectivity to NTRIP service and injecting the RTK data into the mavlink stream, enabling RTK fix on the survey drone. RTK Client must be set up according to guidelines from SPH.

- **Display 4:**

This display shows the output from the Relay UAV H20 camera. It is used for overview and situational awareness and is an important supplement when operating the Survey UAV in close proximity to riverbanks and vegetation.

### 10.3. Crew

For BVLOS operations, a minimum crew of two licensed and PDRA-G03-trained operators are required. In A three-person crew setup is recommended especially if the operators are not significantly experienced and confident regarding workflows, equipment, and BVLOS operator coordination.

- **Operator 1: Survey UAV**

Operator 1 is responsible for operation of the Survey UAV, including payload setup and payload operation. Operator 1 is responsible for keeping the Survey UAV operation within mission parameters. Displays 1 and 2 are the primary sources of information for Operator 1.

- **Operator 2: Relay UAV / GCS Support**

Operator 2 is responsible for operation of the Relay UAV. Operator 2 is responsible for maintaining the Survey UAV in the Relay UAV H20 feed and for maintaining Relay UAV position and orientation relative to the Survey UAV, as this is critical for maintaining relay signal strength and link quality. Displays 3 and 4 are the primary source of information for Operator 2.

Both operators shall communicate vocally during the operation and call out all commands and mission-critical information. The operators shall maintain clear task separation, but both shall maintain sufficient situational awareness to call out an abort of the operation.

## 10.4. BVLOS Doppler Radar Flights

Steps for BVLOS WPR flights, which shall be considered in conjunction with the steps from Section 9.2:

1. Verify that all systems are operational, including Survey UAV, Relay UAV, Relay System, GCS, and payload configuration.
2. Load prepared route in the Survey UAV GCS software.
3. Take off with the Relay UAV and position it at an appropriate altitude and location to maintain line-of-sight and stable C2 link between the GCS and the Survey UAV. Ensure directional antennas are aligned and that Relay UAV H20 feed provides visual coverage of the survey area. Optionally engage the H20 tracking capability on the Survey UAV.
4. Take off with the Survey UAV and manually or via a transit route fly to the planned cross section at a safe altitude.
5. Verify Relay UAV position, antenna alignment, and link quality. Confirm stable C2 link, acceptable latency, and visual coverage of the full cross section. Use both Survey UAV FPV and Relay UAV (Zenmuse H20) feeds to assess obstacles and riverbank conditions.
6. Descend towards survey altitude while continuously monitoring TTF readings, link performance, and video feeds. Abort descent if TTF signal is unstable or if link quality is insufficient.
7. Perform route endpoint adjustments as described in Section 9.2, applying increased safety margins compared to VLOS operations. Utilize both Survey UAV FPV and Relay UAV H20 video feeds to confirm safe distance to riverbanks, vegetation, and obstacles.
8. Once the WPR flight route has been adjusted, specify TTF flight altitude and ensure correct payload configuration. Thereafter execute the automated flight route. It is highly recommended to apply a low flight speed ( $\leq 1$  m/s) under BVLOS conditions to compensate for latency and reduced situational awareness. During flight execution, continuously monitor payload output, Survey UAV FPV feed, Relay UAV feed, and link performance. Manual abort shall be initiated if link quality degrades, payload data becomes unreliable, or obstacle clearance cannot be confirmed.

Ensure that the Survey UAV has RTK fix during data collection.

Perform on-site verification of WPR data as described in Section 9.2. If required, adjust flight parameters or repeat the cross section.

## 10.5. Failsafes

The Survey UAV must support configurable failsafe procedures, which are supported by ArduPilot-based platforms version 4.3 or newer. The recommended Survey UAV, Drone volt Kobra employs an Orange Cube flight computer running ArduPilot v.4.5.1, and thus fully supports required failsafe features/control.

Upon C2 link loss, the Survey UAV shall initiate SmartRTL. This avoids vertical climb behaviour and enables return along the previously flown path, which is critical for operations conducted below tree canopy and along riverbanks.

Upon GPS link loss, the Survey UAV shall initiate hover state. This enables the Survey UAV Operator to decide upon manual control versus SmartRTL or another appropriate recovery procedure. In this context, dead reckoning may support short-duration position estimation based on the last valid navigation solution and aircraft motion, which can assist the UAV in maintaining controlled flight immediately after GNSS loss.

## 11. Post-survey Data Processing Steps

### 11.1. Doppler Radar Data

The doppler radar survey produces the following output:

- 1) Doppler radar spectrum file in SEG-Y format
- 2) Doppler radar data file in CSV format
- 3) Position log file including trace numbers in CSV format
- 4) Rover GNSS raw observation file
- 5) Local base station raw observation and navigation files

The doppler spectrum is a two-dimensional data structure. It consists of a few hundred to a few thousand traces (radar echo curves). Each trace has 4,096 samples, with each sample containing the energy of the echo at a specific frequency bin. The doppler shift observed in the radar signal corresponds to the velocity of the water surface relative to the sensor.

The following describes the steps for processing acquired doppler radar data.

For in depth description of processing details please refer to Zhou et al., 2024.

For python code and addition processing description please refer to Zhou, Z. [Software].

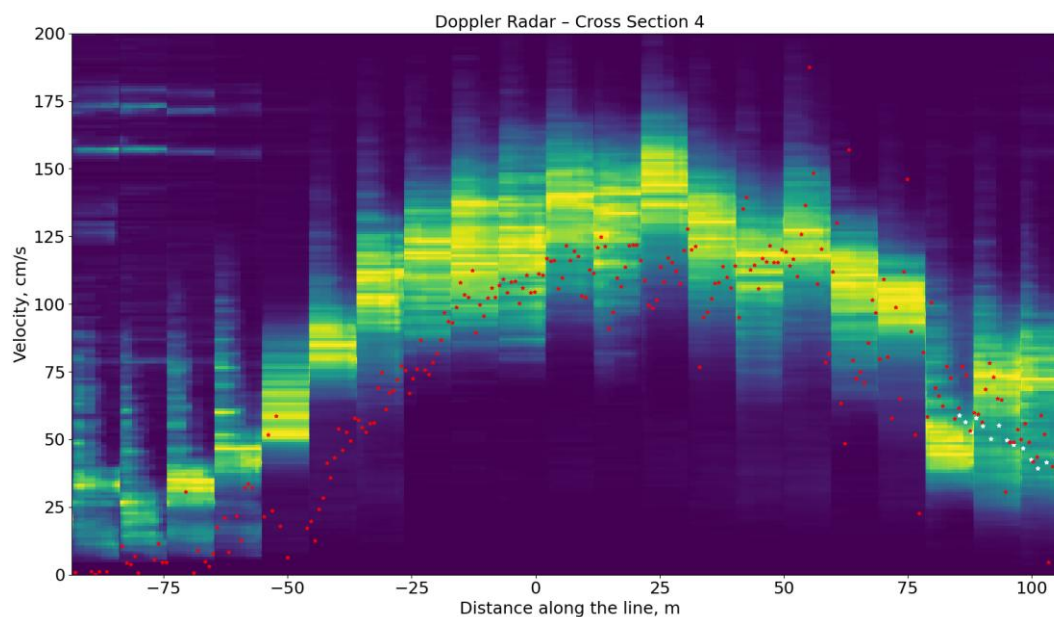
Doppler radar processing consists of the following steps:

1. Perform PPK processing is necessary. Ideally RTK should be active during all doppler radar data acquisition since the data quality may be lower without. RTK status can be inspected in the position log file. PPK processing is performed using the position log, local base station raw observations and the rover GPS raw GNSS observations. Various software solutions can perform this task, ex. Emlid Studio.
2. Segregate doppler radar traces according to flown waypoints using the python code example: 'Plot\_altitude\_vs\_traces\_vs\_distance\_example.py'
3. Apply Gaussian model fitting using the python code example: 'Reselect\_traces\_Gaussian\_fitting.py'

## 12. Output Data Formats and Example Output

### 12.1. Doppler Radar Output

Example output of doppler radar surveys can be found on the UAWOS data repository at <https://data.dtu.dk/projects/UAWOS/164815>. The figure below shows a processed radargram for one of the cross sections of Torne River in Sweden.



**Figure 13 - Processed doppler radar velocimetry radargram for cross section 4 of Torne River. Red dots are ADCP ground truth, white dots along the right edge are OTT MFPro ground truth**

## 13. References

- Gordon, R.L., 1989. Acoustic measurement of river discharge. *Journal of Hydraulic Engineering* 115. doi:10.1061/(ASCE)0733-9429(1989)115:7(925)
- Legleiter, C.J., Kinzel, P.J., Dille, M., Vespignani, M., Wong, U., Anderson, I., Hyde, E., Gazoorian, C., Cramer, J.M., 2024. Mapping River Flow from Thermal Images in Approximately Real Time: Proof of Concept on the Sacramento River, California, USA. *Remote Sens (Basel)* 16, 4746. doi:10.3390/rs16244746
- Manfreda, S., Dor, E. Ben, 2023. Remote sensing of the environment using unmanned aerial systems. *Unmanned Aerial Systems for Monitoring Soil, Vegetation, and Riverine Environments* 3–36. doi:10.1016/B978-0-323-85283-8.00009-6
- Strelnikova, D., Perks, M.T., Dal Sasso, S.F., Pizarro, A., 2023. River flow monitoring with unmanned aerial system. *Unmanned Aerial Systems for Monitoring Soil, Vegetation, and Riverine Environments* 231–269. doi:10.1016/B978-0-323-85283-8.00012-6
- Zhou, Z., Riis-Klinkvort, L., Jørgensen, E.A., Lindenhoff, C., Frías, M.C., Vesterhauge, A.R., Olesen, D.H., Lavish, M., Dobrovolskiy, A., Kadek, A., Gustafsson, D., Bauer-Gottwein, P., 2024. Measuring River Surface Velocity Using UAS-Borne Doppler Radar. *Water Resour Res* 60. doi:10.1029/2024WR037375
- Zhou, Z. [Software]. Code for measuring river surface velocity using UAS-borne Doppler radar (version 1.0). DTU. <https://doi.org/10.11583/DTU.26069425>